

Fabled Silver Gold Corp.

Suite 480 – 1500 West Georgia St.

Vancouver, BC V6G 2Z6

Telephone: 819-316-0919

TSX-V: FCO

www.fabledsilvergoldcorp.com

FABLED
SILVER GOLD
CORP.



April 13, 2022

TSX-V: FCO

PLANNING OF PHASE 2 EXPLORATION DIAMOND PROGRAM ON THE SANTA MARIA PROPERTY ONGOING

Vancouver, British Columbia – Fabled Silver Gold Corp. (“Fabled” or the “Company”) (TSXV: FCO; OTCQB: FBSGF, and FSE: 7NQ) reports that it has completed part of the planning for a Phase 2 exploration diamond drill program on the Santa Maria Property in Parral, Mexico.

Peter Hawley, President, CEO reports; “As mentioned before, the past year of exploration diamond drilling, underground diamond drilling, definition diamond drilling, and finally surface mapping and sampling, has been not only aggressive, but has resulted in over 6,900 samples collected and analyzed. This massive input of data has led our stream lined analytical team to new important understandings of the structural and mineralization controls on the western sector of the property where approximately 80% of our efforts over the past year were focused.

Before we report our new findings I would like to extend our thanks to our Project Manager Joaquin Rodriguez and senior geologist Edgar Rojas for their contribution to these important steps forward.”

When the Company embarked on this project, we were of the opinion this was a low sulfidation epithermal system deposit and contained two veins of interest. The Santa Maria and Santa Maria Dos veins.

Following the completion of the Phase 1 drilling we have now had time to “stop chasing the bit” and have compiled the total data collected. Through analysis of the data generated many things have become clear.

The veins thought to be the Santa Maria veins are in fact mineralized breccias at the contacts or within diorite dikes. Furthermore, there are different generations of structural / mineralization controls and some of the 2021 exploration drilling intercepted one of the secondary mineralized dike structures which is the Santa Maria off-set to the northeast which remains open in all directions.

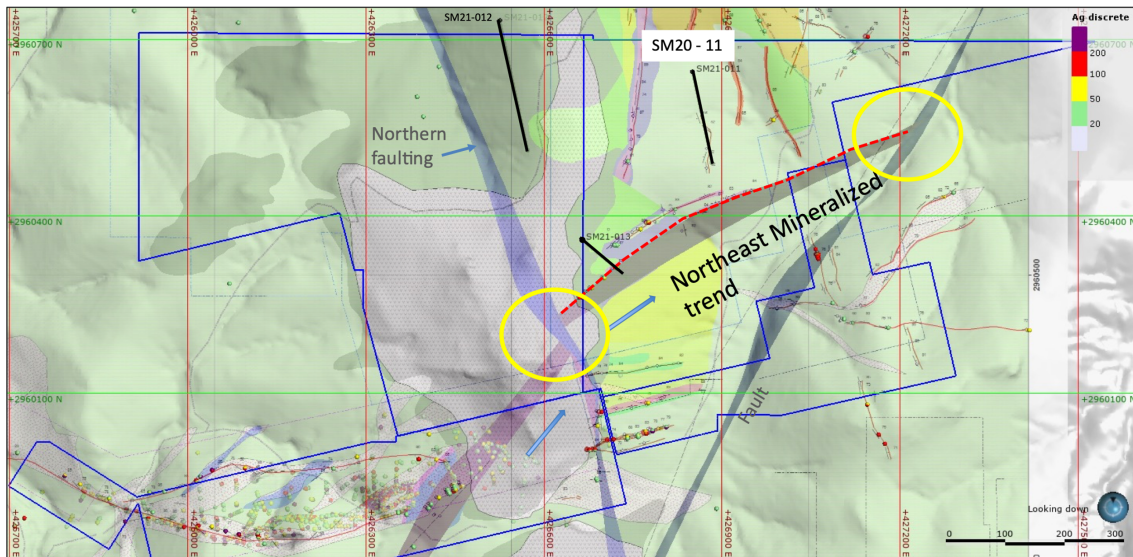
Using the valuable 2021 drilling information, we will apply the new structural interpretation and the Santa Maria signature and controls to the rest of the property, paying particular attention to the mineralized structures / breccias. Due to the association with the diorite dikes the present focus of sampling is the dikes, the mineralization found within or with a relationship to them.

Detailed field mapping and structural analyses led by our senior team including our Project Manager has resulted in the below, property wide interpretation in preparation for Phase 2 exploration drill targets.

As previously reported past surface sampling of the “Northeast Structure” has reported surface sampling of 1.25 meters of 72.12 g/t Ag Eq and 2.20 meters grading 116.20 g/t Ag Eq including 206.80 g/t Ag Eq over 0.80 meters. In addition, it is now realized that drill hole SM20-11 intercepted the Northeast secondary mineralized structure and reported 3 separate mineralized zones; Zone 1 from 62.80 – 95.59 meters grading 31.72 g/t Ag Eq over the 26.90 meters including 1.20 meters grading 110.11 g/t Ag Eq; Zone 2 from 101 – 103.20 reporting 118.57 g/t Ag Eq over the 2.20 meters and the third Zone which returned 3.50 meters grading 40.80 g/t Ag Eq.

Of particular interest are the areas for possible structural dilation zones. See the yellow circles in Figure 1 below.

Figure 1 – Property Wide Structural Interpretation



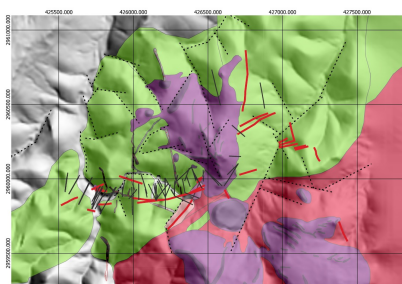
The 2022 field work and observations are currently ongoing with the following completed as of the end of March 2022;

- 258 new surface samples taken to date
 - 138 samples pending assay results
- 11,388 square kilometers of detailed geological mapping
- 237 structural stations for detailed structural interpretations

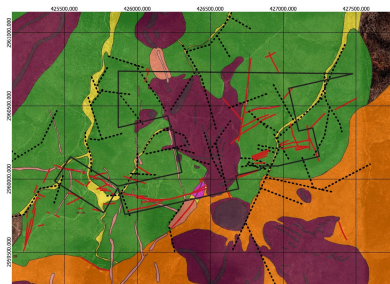
See Figure 2 below of geological mapping to date.

Figure 2

- 258 surface samples taken for targeting purposes
- 11,388 km² of detailed geological mapping
- 237 structural stations for detailed structural interpretations



Present Mapping Results



Preliminary Mapping Results

As a result of work to date, 5 mineral / structural trends have been observed and are potential targets.

1. North East mineralized breccia system, successfully intercepted in drill hole SM20-11,
2. North West mineralized oxidized breccia system,
3. East-Northeast breccia between two major faults,
4. Parallel and to the north of target 3, breccia cemented with calcite / quartz, (assays pending) with numerous old shafts / adits not documented.
5. North-Northeast C-1 tectonic fault which cross cuts the Santa Maria mineralized trend creating a prospective dilation zone.

See Figures 3,4,5 below.

Figure 3

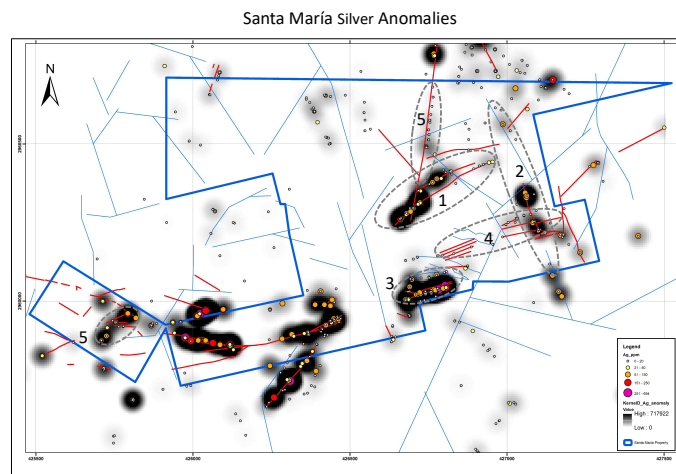
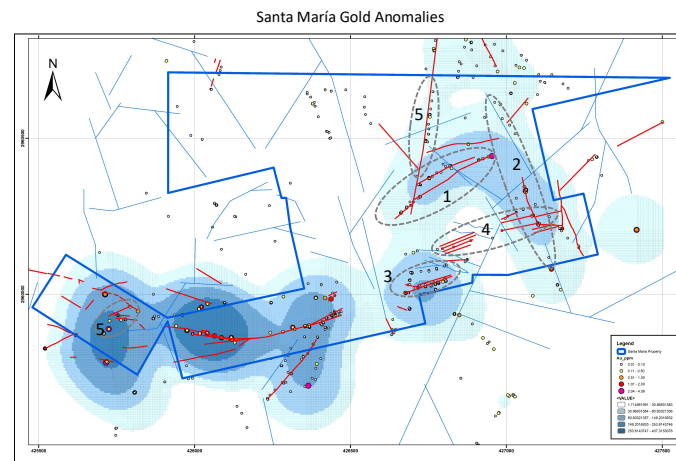


Figure 4



Drill Pad Location Update

The definition drilling / infill drilling pads have been prepared in advance with ample water for surface drilling.

Field exploration is on going but the geological models and results from sapling mineralized structures will define or locate the various drill stations. The drill stations with the lowest environmental impact will help to determine the drill locations.

Exploration drill stations outside the currently permitted area will be incorporated in to an amendment to our current drill permit and filed with SEMARAT. While this process is on-going exploration drilling of the permitted sites is scheduled to begin mid June 2022.

QA QC Procedure

Analytical results of sampling reported by Fabled Silver Gold represent core samples that have been sawn in half with half of the core sampled and submitted by Fabled Silver Gold staff directly to ALS Chemex, Chihuahua, Chihuahua, Mexico. Samples were crushed, split, and pulverized as per ALS Chemex method PREP-31, then analyzed for ME-ICP61 33 element package by four acid digestion with ICP-AES Finish. ME-GRA21 method for Au and Ag by fire assay and gravimetric finish, 30g nominal sample weight.

Over Limit Methods

For samples triggering precious metal over-limit thresholds of 10 g/t Au or 100 g/t Ag, the following is being used:

Au-GRA21 Au by fire assay and gravimetric finish with 30 g sample. Ag-GRA21 Ag by fire assay and gravimetric finish.

Fabled Silver Gold monitors QA/QC using commercially sourced standards and locally sourced blank materials inserted within the sample sequence at regular intervals.

About Fabled Silver Gold Corp.

Fabled is focused on acquiring, exploring and operating properties that yield near-term metal production. The Company has an experienced management team with multiple years of involvement in mining and exploration in Mexico. The Company's mandate is to focus on acquiring precious metal properties in Mexico with blue-sky exploration potential.

The Company has entered into an agreement with Golden Minerals Company (NYSE American and

Fabled Silver Gold Corp.

Suite 480 – 1500 West Georgia St.

Vancouver, BC V6G 2Z6

Telephone: 819-316-0919

TSX-V: FCO

www.fabledsilvergoldcorp.com

FABLED
SILVER GOLD
CORP.



TSX: AUMN) to acquire the Santa Maria Property, a high-grade silver-gold property situated in the center of the Mexican epithermal silver-gold belt. The belt has been recognized as a significant metallogenic province, which has reportedly produced more silver than any other equivalent area in the world.

Mr. Peter J. Hawley, President and C.E.O.

Fabled Silver Gold Corp. Phone: (819) 316-0919

peter@fabledfco.com

For further information please contact: info@fabledfco.com

The technical information contained in this news release has been approved by Peter J. Hawley, P.Geo. President and C.E.O. of Fabled, who is a Qualified Person as defined in National Instrument 43-101 - Standards of Disclosure for Mineral Projects.

Neither the TSX Venture Exchange nor its Regulations Service Provider (as that term is defined in the policies of the TSX Venture Exchange) does accept responsibility for the adequacy or accuracy of this news release.

Certain statements contained in this news release constitute "forward-looking information" as such term is used in applicable Canadian securities laws. Forward-looking information is based on plans, expectations and estimates of management at the date the information is provided and is subject to certain factors and assumptions, including, that the Company's financial condition and development plans do not change as a result of unforeseen events and that the Company obtains any required regulatory approvals.

Forward-looking information is subject to a variety of risks and uncertainties and other factors that could cause plans, estimates and actual results to vary materially from those projected in such forward-looking information. Some of the risks and other factors that could cause results to differ materially from those expressed in the forward-looking statements include, but are not limited to: impacts from the coronavirus or other epidemics, general economic conditions in Canada, the United States and globally; industry conditions, including fluctuations in commodity prices; governmental regulation of the mining industry, including environmental regulation; geological, technical and drilling problems; unanticipated operating events; competition for and/or inability to retain drilling rigs and other services; the availability of capital on acceptable terms; the need to obtain required approvals from regulatory authorities; stock market volatility; volatility in market prices for commodities; liabilities inherent in mining operations; changes in tax laws and incentive programs relating to the mining industry; as well as the other risks and uncertainties applicable to the Company as set forth in the Company's continuous disclosure filings filed under the Company's profile at www.sedar.com. The Company undertakes no obligation to update these forward-looking statements, other than as required by applicable law.